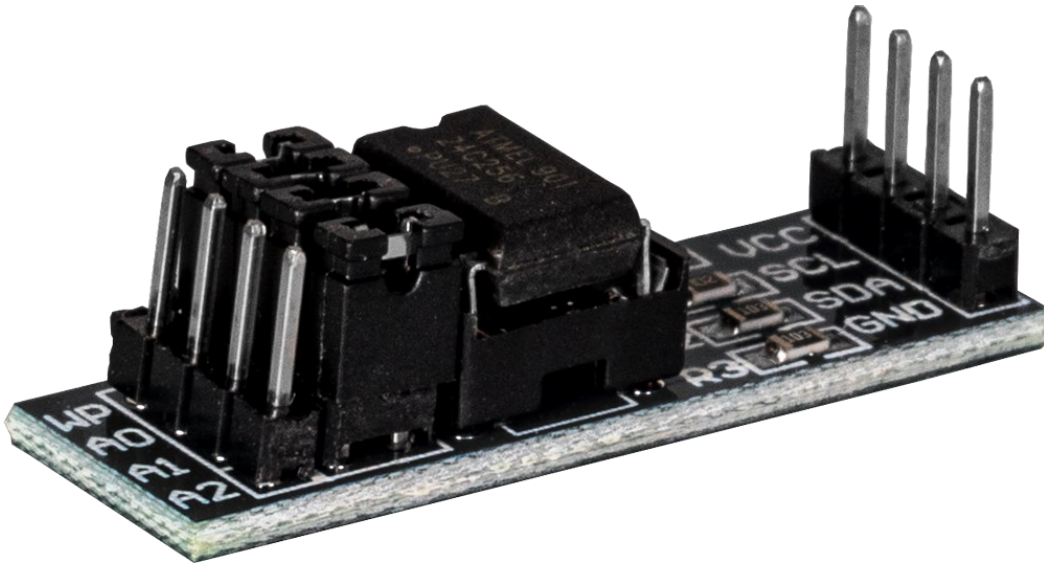


32 KB EEPROM STORAGE MODULE

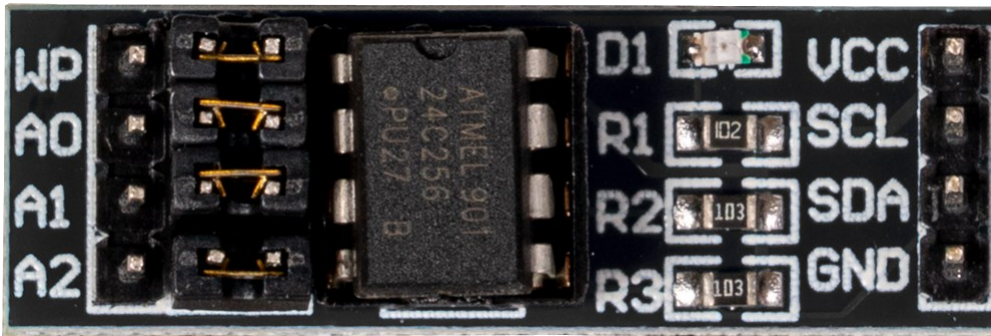
COM-EEPROM32



1. GENERAL INFORMATION

Dear customer,
thank you very much for choosing our product.
In the following, we will introduce you to what to observe while starting up and using this product.
Should you encounter any unexpected problems during use, please do not hesitate to contact us.

2. ADJUSTMENT OPTIONS



The EEPROM module has four jumpers, which offer further setting options. The jumpers A0, A1 and A2 are used to set the I2C address. The jumper WP (Write Protect) serves to prevent the writing of the EEPROM if necessary. This is active if the jumper is plugged in at the right.

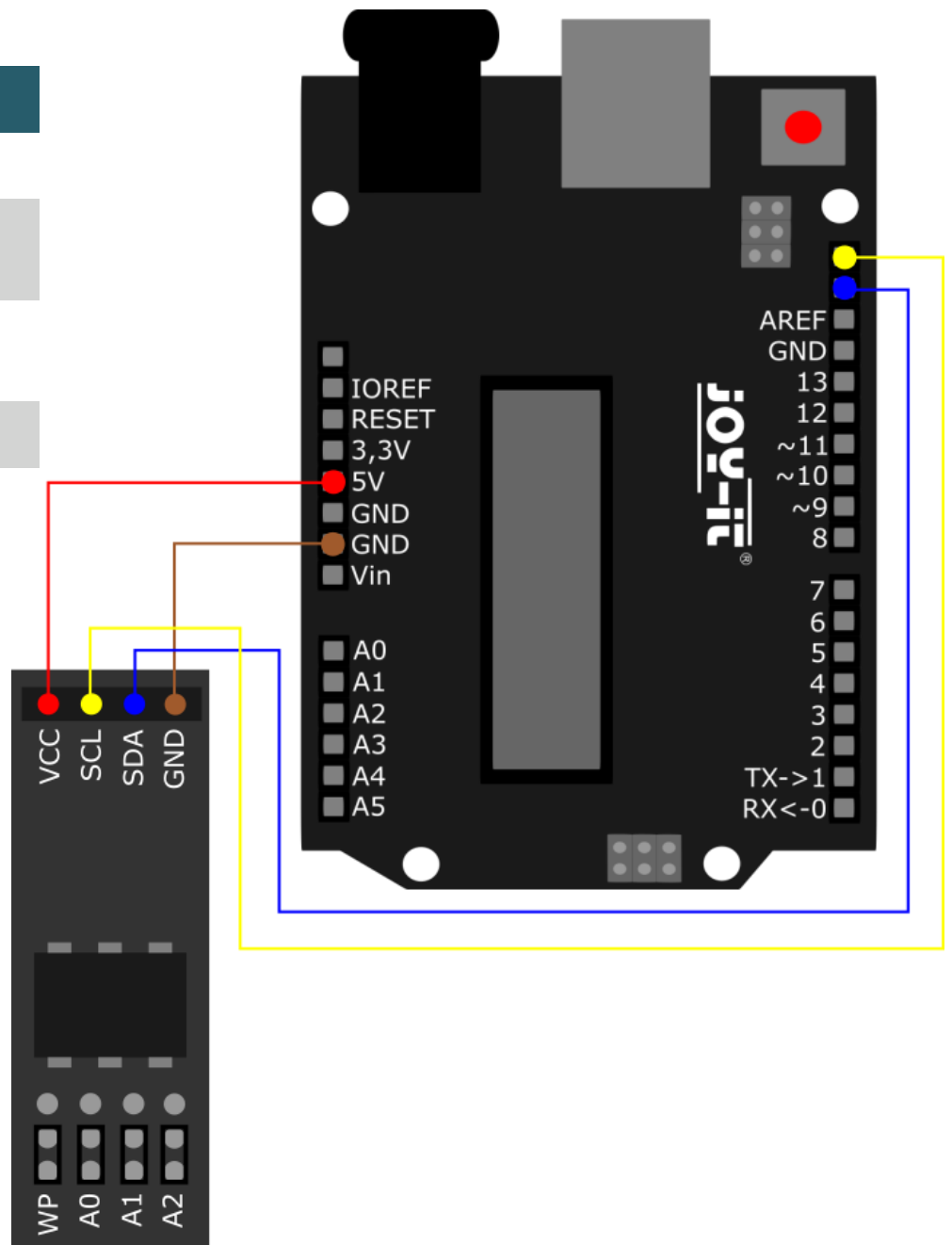
Addresses	A2	A1	A0
0x50	Left	Left	Left
0x51	Left	Left	Right
0x52	Left	Right	Left
0x53	Left	Right	Right
0x54	Right	Left	Left
0x55	Right	Left	Right
0x56	Right	Right	Left
0x57	Right	Right	Right

Read-only	WP
Yes	Right
No	Left

3. USAGE WITH THE ARDUINO

3.1 Connection

EEPROM	Arduino
VCC	5V
SCL	D19 (SCL)
SDA	D18 (SDA)
GND	GND



3.2 Code example

We provide you with a code example, which you can download [here](#). In this code sample, a value is written to a certain register and from this register the value is read out again. After you open the code sample in your Arduino IDE, you can execute the code sample on your Arduino by clicking on **Upload**. Make sure that the **Port** and **Board** are set correctly under **Tools**.

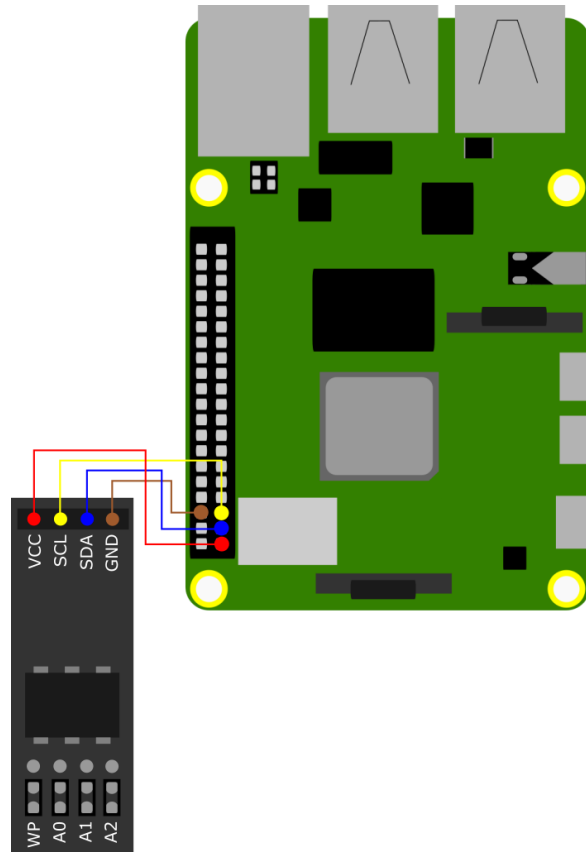
4. USAGE WITH RASPBERRY PI



This guide was written under Raspberry Pi OS Bookworm for the Raspberry Pi 4 and 5. It has not been checked with newer operating systems or hardware.

4.1 Connection

EEPROM	Raspberry Pi
VCC	3.3 V
SCL	GPIO 2 (SCL)
SDA	GPIO 3 (SDA)
GND	GND



4.2 Code example

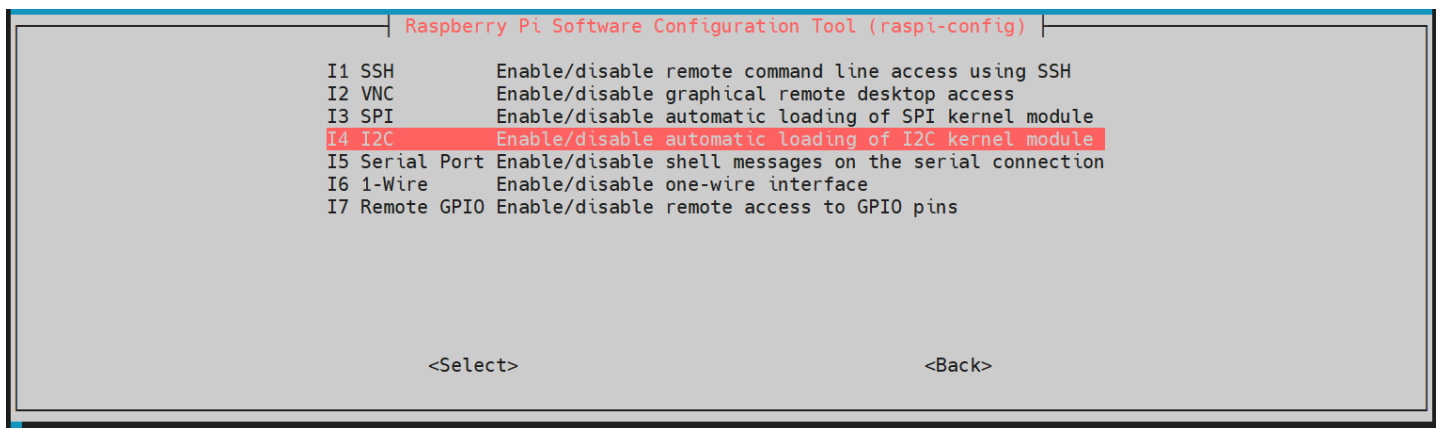
First, enable the I2C interface of your Raspberry Pi. To do this, enter the following command in your terminal.

```
sudo raspi-config
```

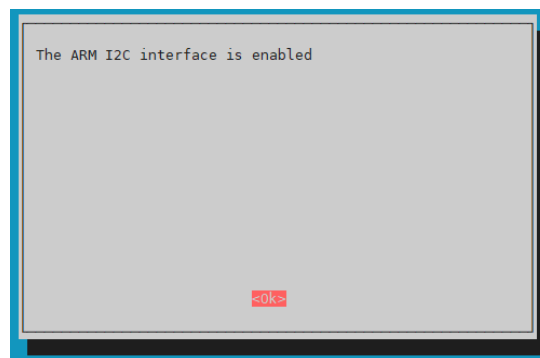
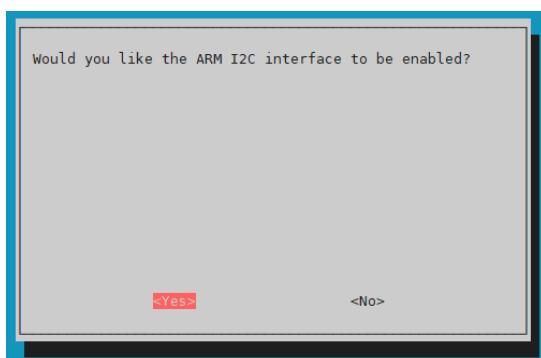
```
Raspberry Pi Software Configuration Tool (raspi-config)
1 System Options      Configure system settings
2 Display Options     Configure display settings
3 Interface Options   Configure connections to peripherals
4 Performance Options Configure performance settings
5 Localisation Options Configure language and regional settings
6 Advanced Options   Configure advanced settings
8 Update              Update this tool to the latest version
9 About raspi-config  Information about this configuration tool

<Select>                                <Finish>
```

Select there **3 Interface Options** → **I4 I2C**.



There you activate I2C.



Now, install the necessary dependencies for the code sample.

```
sudo apt update
```

```
sudo apt-get install python3-smbus
```

Now download [here](#) or with the following command, the code example provided by us.

```
wget https://www.joy-it.net/files/files/Produkte/COM-EEPROM-32/COM-EEPROM-32_CodeexampleRaspberryPi.zip
```

Now, unpack the file with the following command. Please note that the path could differ in some cases.

```
unzip COM-EEPROM-32_CodeexampleRaspberryPi.zip
```

You can execute the code example with the following command. In the code example, the Raspberry Pi writes a value to the EEPROM and also reads it out again.

```
python3 COM-EEPROM-32_CodeexampleRaspberryPi/COM-EEPROM-32.py
```

5. OTHER INFORMATION

Our information and take-back obligations according to the Electrical and Electronic Equipment Act (ElektroG)

Symbol on electrical and electronic equipment:



This crossed-out dustbin means that electrical and electronic appliances do not belong in the household waste. You must return the old appliances to a collection point.

Before handing over waste batteries and accumulators that are not enclosed by waste equipment must be separated from it.

Return options:

As an end user, you can return your old device (which essentially fulfils the same function as the new device purchased from us) free of charge for disposal when you purchase a new device.

Small appliances with no external dimensions greater than 25 cm can be disposed of in normal household quantities independently of the purchase of a new appliance.

Possibility of return at our company location during opening hours:

SIMAC Electronics GmbH, Pascalstr. 8, D-47506 Neukirchen-Vluyn, Germany

Possibility of return in your area:

We will send you a parcel stamp with which you can return the device to us free of charge. Please contact us by email at Service@joy-it.net or by telephone.

Information on packaging:

If you do not have suitable packaging material or do not wish to use your own, please contact us and we will send you suitable packaging.

6. SUPPORT

If there are still any issues pending or problems arising after your purchase, we will support you by e-mail, telephone and with our ticket support system.

Email: service@joy-it.net

Ticket system: <https://support.joy-it.net>

Telephone: +49 (0)2845 9360-50 (Mon - Thur: 09:00 - 17:00 o'clock,
Fri: 09:00 - 14:30 o'clock)

For further information please visit our website:

www.joy-it.net