

FLASH MANUAL

JT-DMSO2D72



1. GENERAL INFORMATION

Dear customer,
thank you very much for choosing our product.
In the following, we will introduce you to what to observe while starting up and using this product.
Should you encounter any unexpected problems during use, please do not hesitate to contact us.



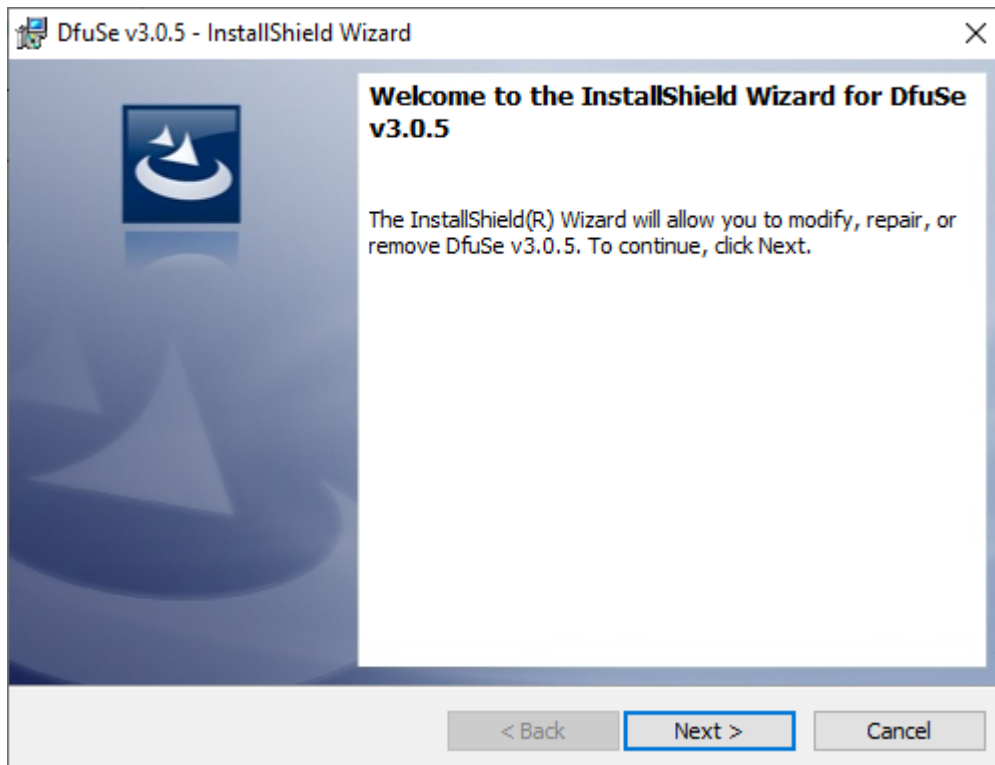
To flash your JT-DMSO2D72, use only the firmware versions published by Joy-it.

The firmware versions published by Joy-it are specially adapted to the JT-DMSO2D72 and should never be used for other devices.

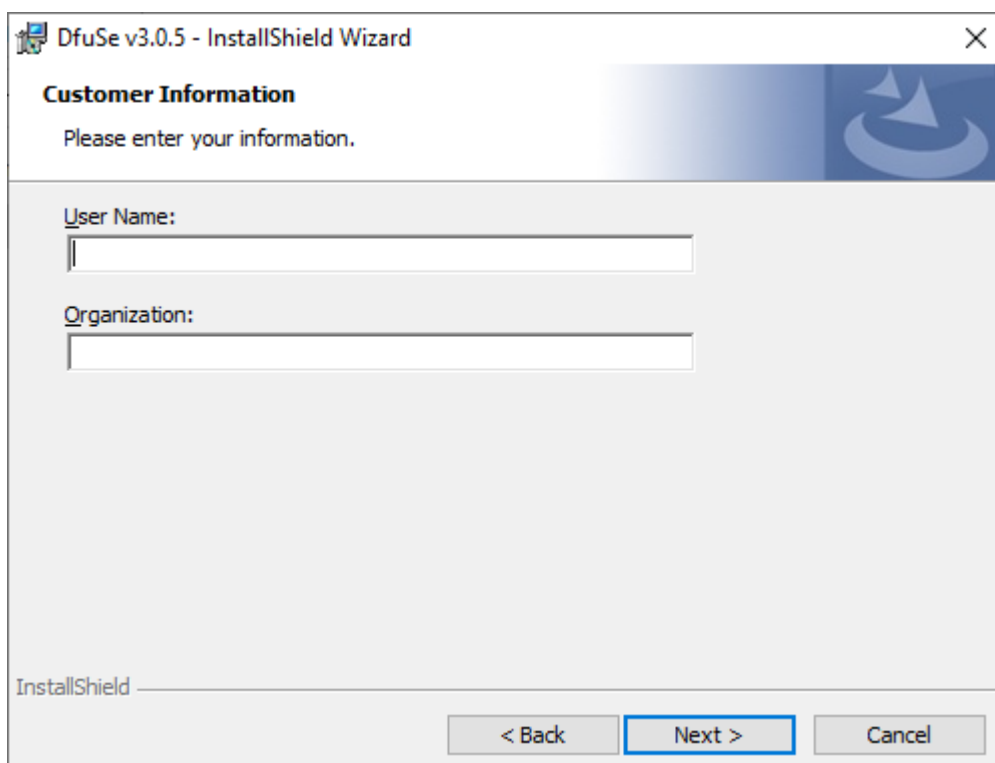
2. INSTALLING THE REQUIRED SOFTWARE

First you have to download the software for flashing, you can find it [here](#).

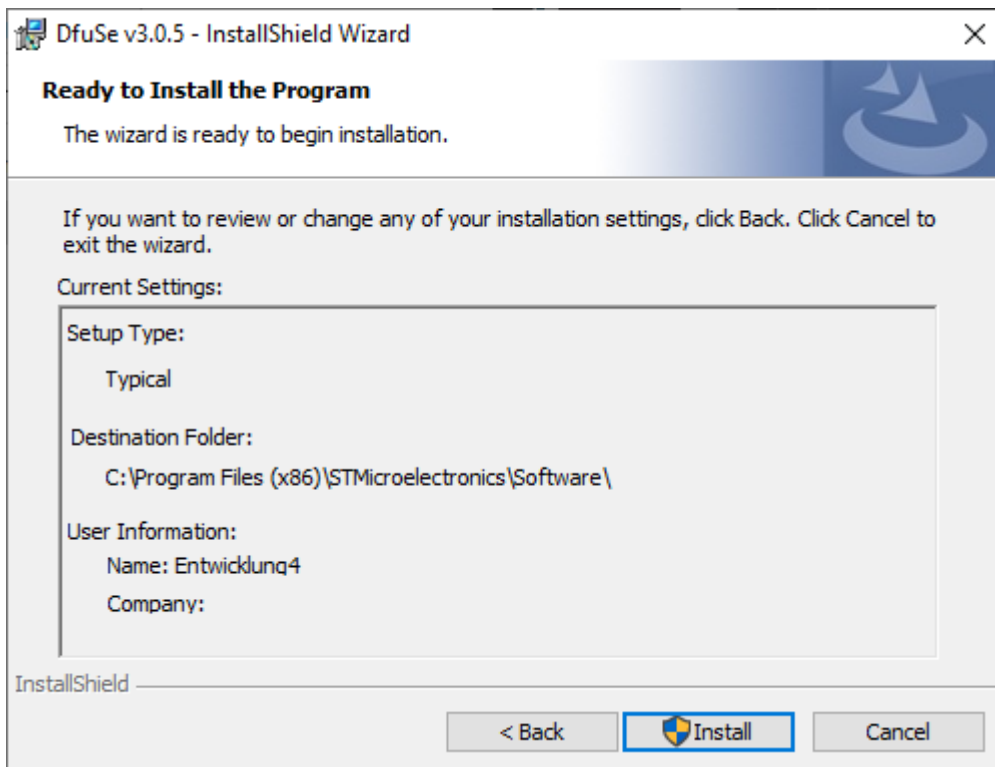
Start the just downloaded installation file.



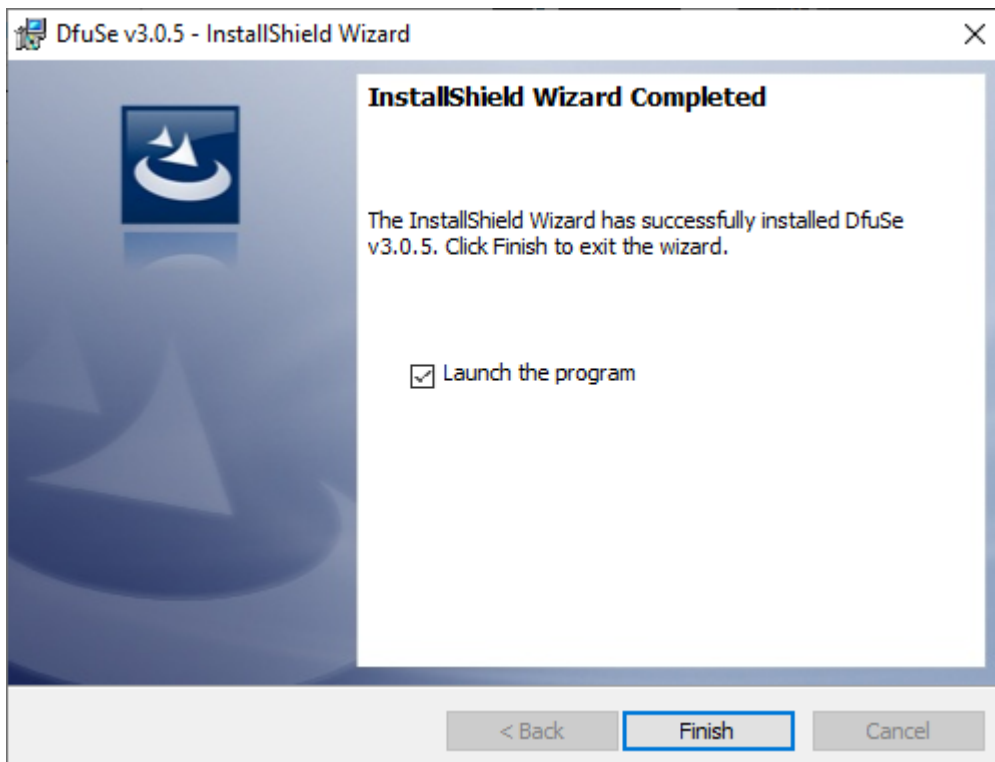
Click **Next >**.



Your user name should now appear in the upper of the two input fields, otherwise enter it and click **Next >**.



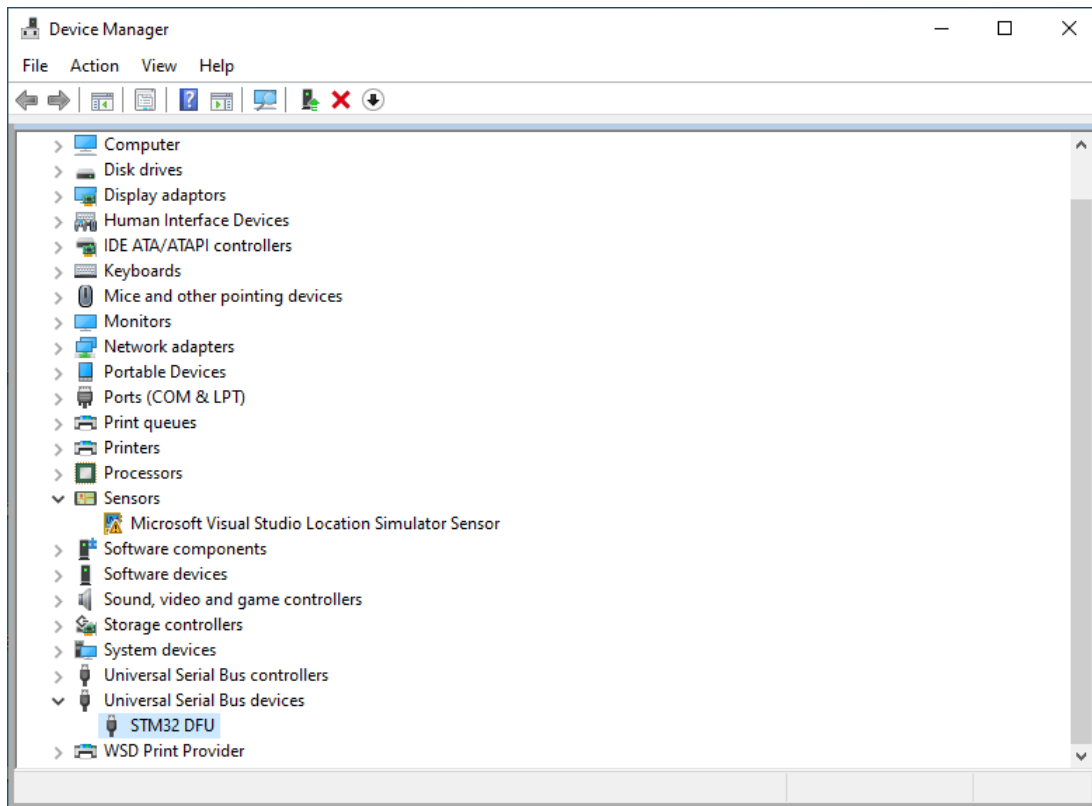
Now click on **Install**.



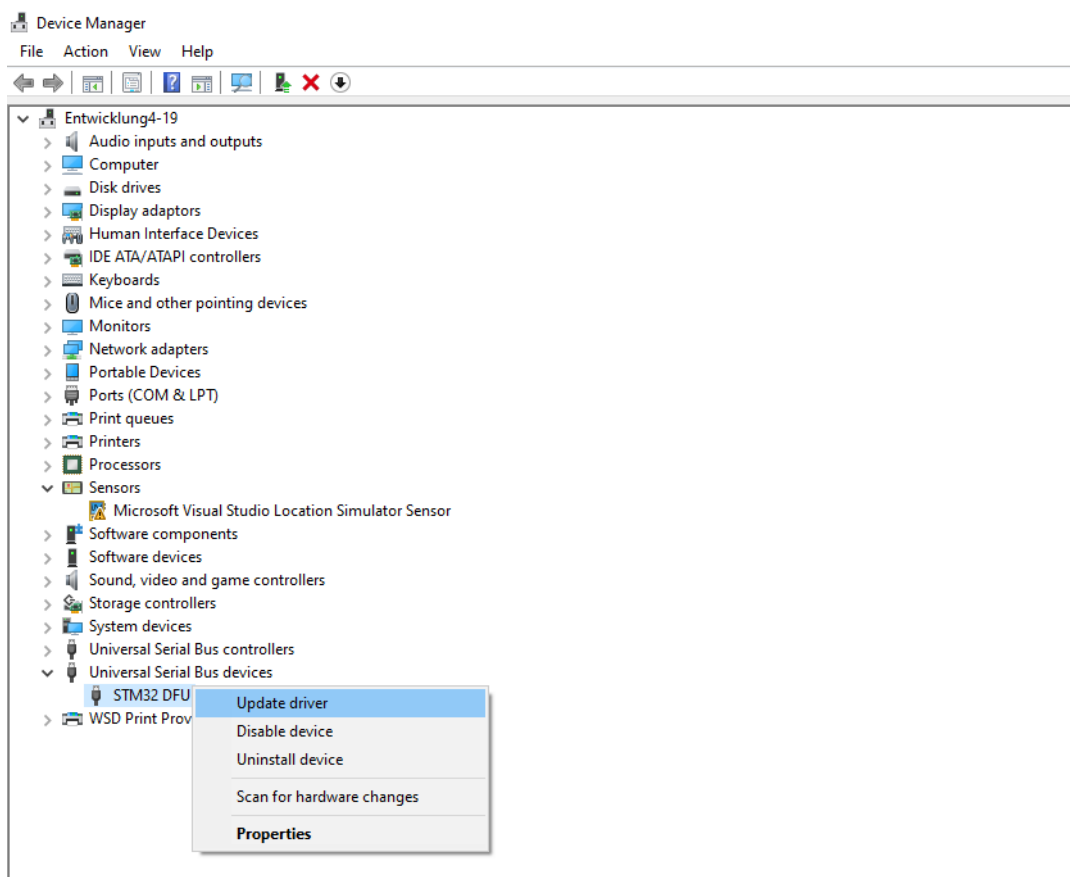
Finally, complete the installation by clicking **Finish**.

To install the required driver, you must first open your Device Manager.

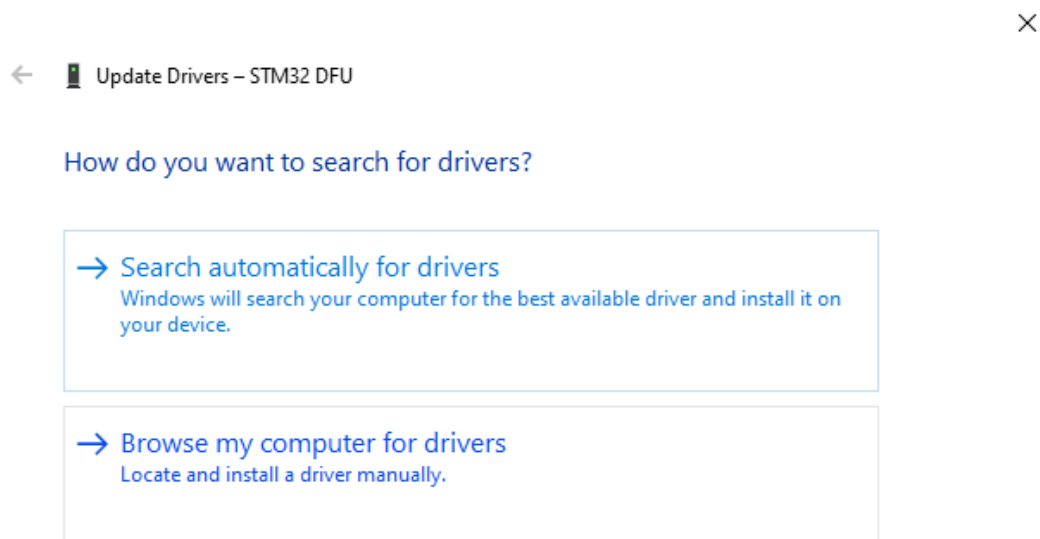
Now search for the device STM32 DFU, the device name may vary slightly.



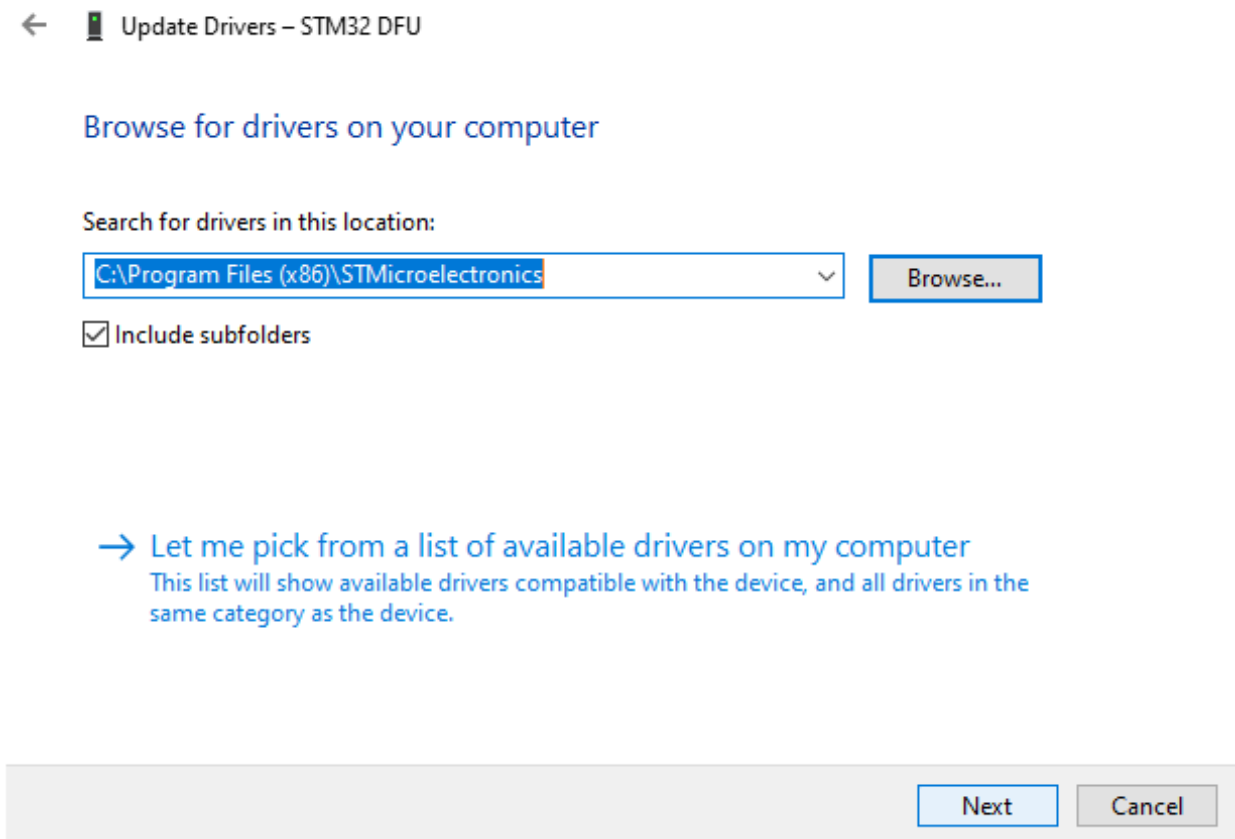
Now click on the device with the right mouse button and select **Update driver**.



Next, click on **Browse my computer for drivers**



Now enter the location of the previously installed software and then click **Next** to start the driver installation.




3. FLASHING THE FIRMWARE

Download the latest firmware version [here](#).

Now connect your DMSO to your computer with the USB cable and open the previously installed flash software.

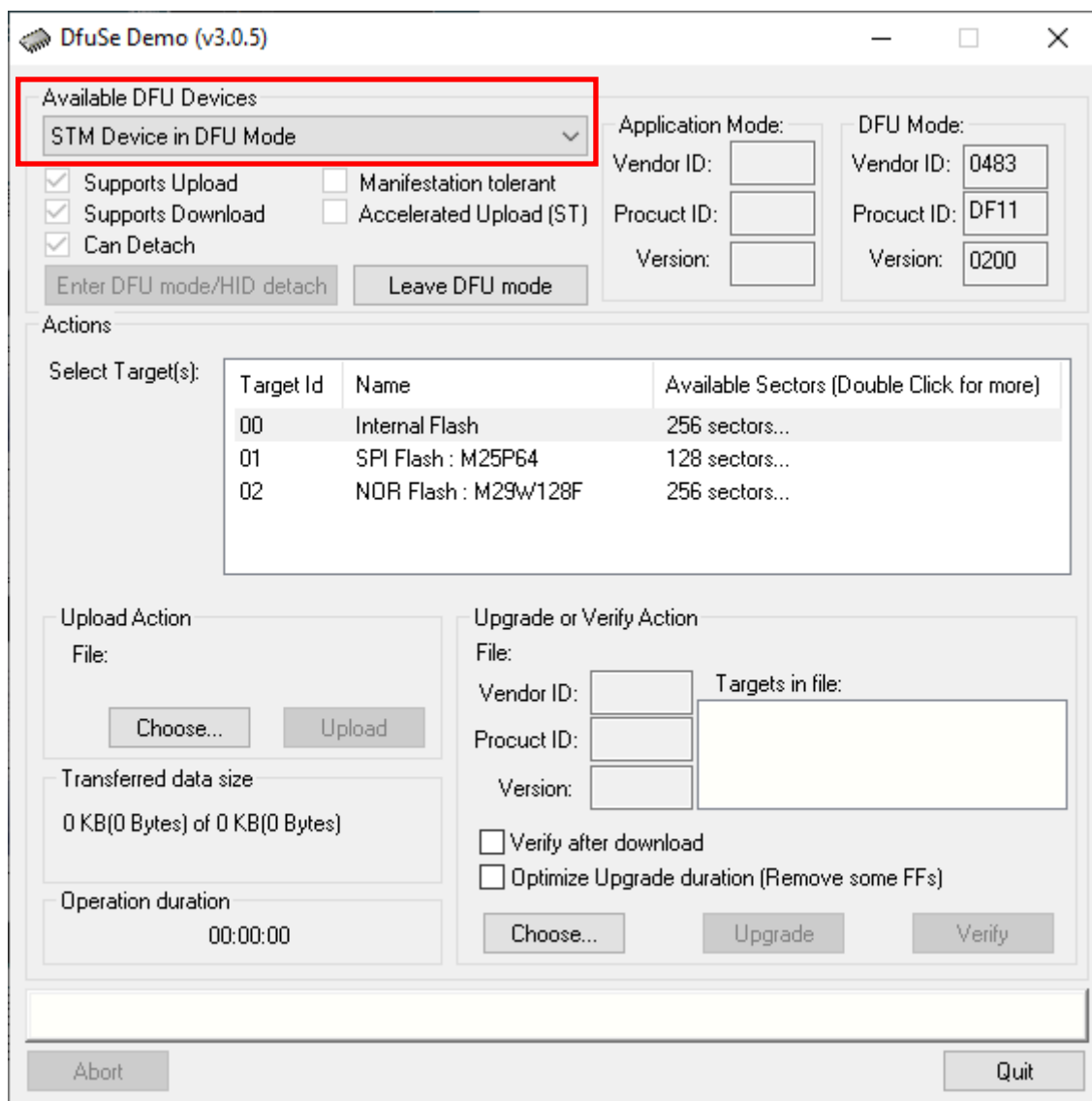
Now press and hold the **F1** key while the device is switched off

and press the -key.

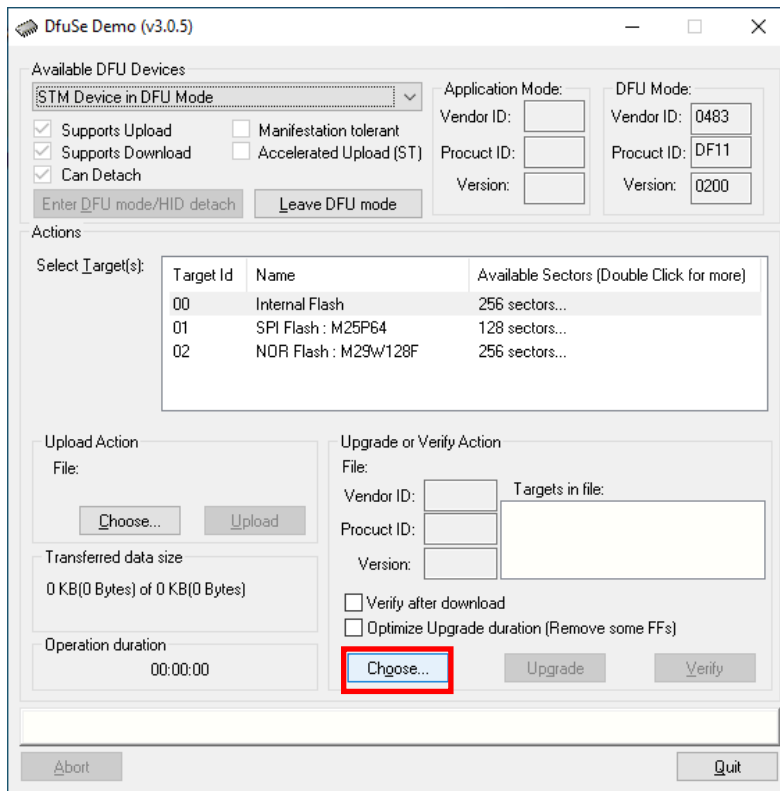
Now the -key should first light up light green and then alternately flash green and red.

This means that the device is now in flash mode.

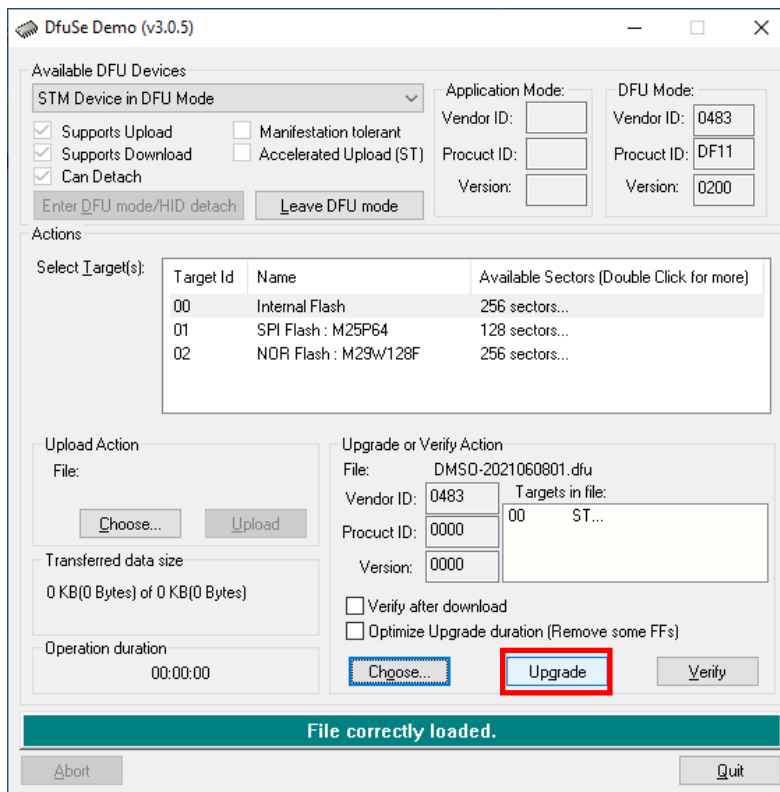
Now you should also be able to see the device in the flash software.



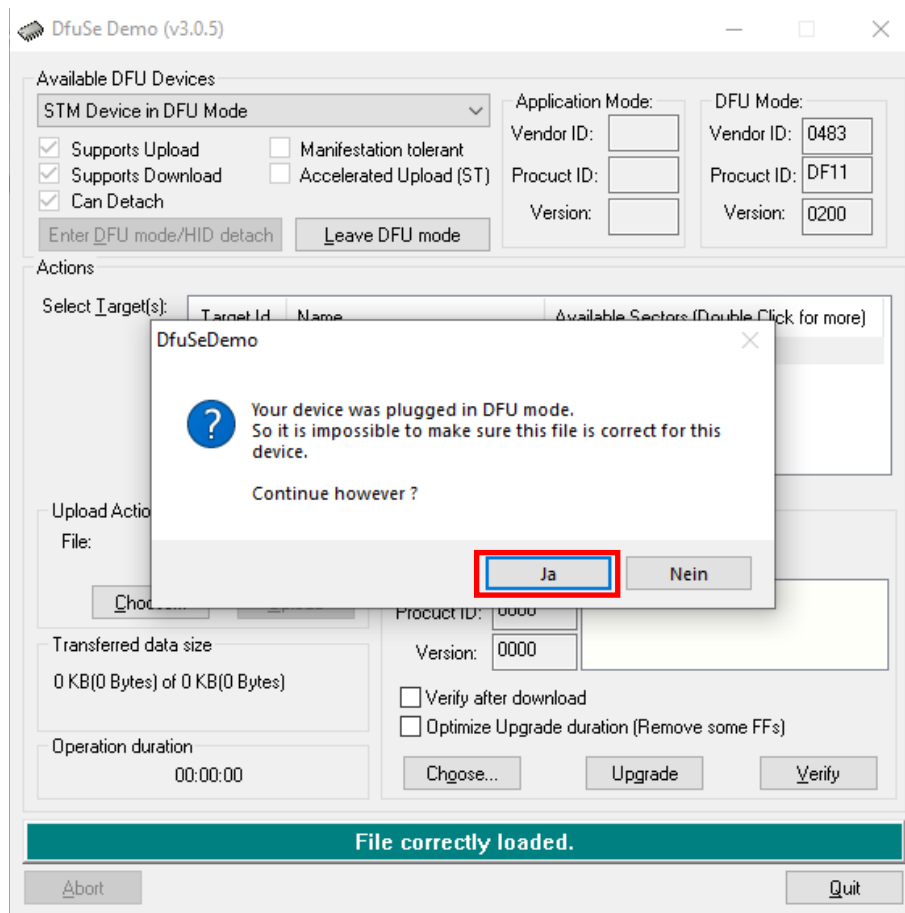
Now click on **Choose...** as marked in the picture below and select the firmware you want to install on the device.



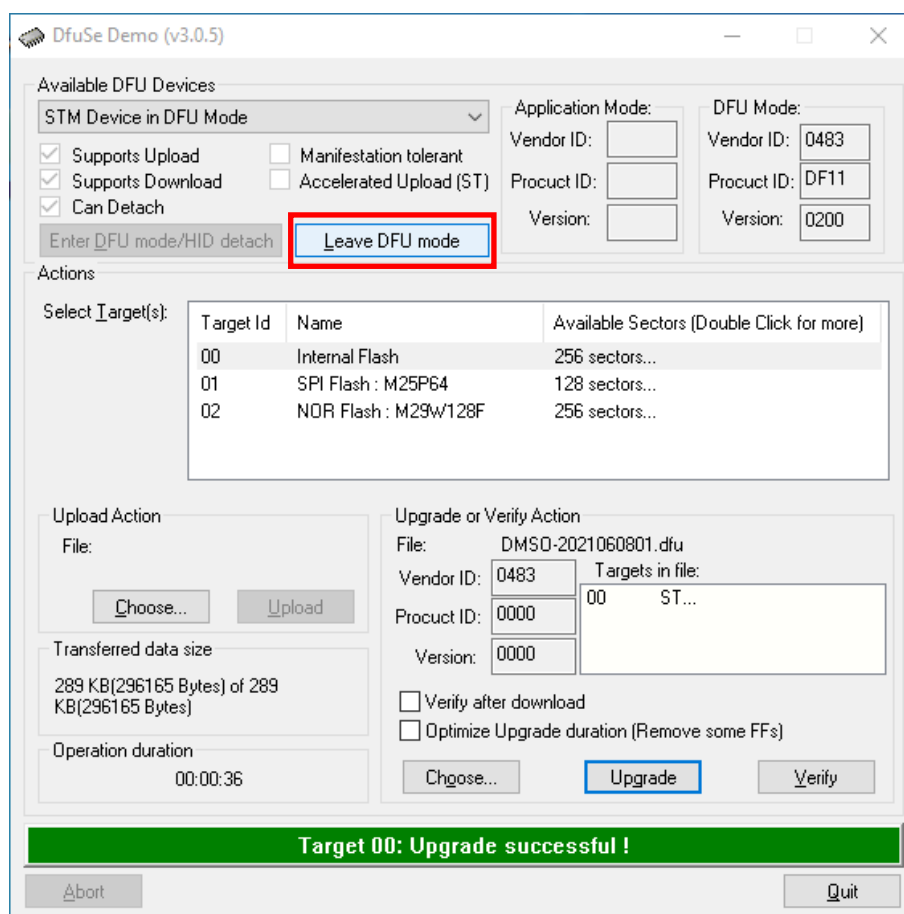
Next, click on **Upgrade**.



Confirm the following message to start the flash process.



After successful flashing you can leave the flash mode by clicking on **Leave DFU mode**.



Your device is now ready for use again.

4. ADDITIONAL INFORMATION

Our information and take-back obligations according to the Electrical and Electronic Equipment Act (ElektroG)



Symbol on electrical and electronic equipment:

This crossed-out dustbin means that electrical and electronic appliances do not belong in the household waste. You must return the old appliances to a collection point.

Before handing over waste batteries and accumulators that are not enclosed by waste equipment must be separated from it.

Return options:

As an end user, you can return your old device (which essentially fulfils the same function as the new device purchased from us) free of charge for disposal when you purchase a new device.

Small appliances with no external dimensions greater than 25 cm can be disposed of in normal household quantities independently of the purchase of a new appliance.

Possibility of return at our company location during opening hours:

SIMAC Electronics GmbH, Pascalstr. 8, D-47506 Neukirchen-Vluyn, Germany

Possibility of return in your area:

We will send you a parcel stamp with which you can return the device to us free of charge. Please contact us by email at Service@joy-it.net or by telephone.

Information on packaging:

If you do not have suitable packaging material or do not wish to use your own, please contact us and we will send you suitable packaging.

5. SUPPORT

If there are still any issues pending or problems arising after your purchase, we will support you by e-mail, telephone and with our ticket support system.

Email: service@joy-it.net

Ticket system: <http://support.joy-it.net>

Telephone: +49 (0)2845 98469-66 (10-17 o'clock)

For further information please visit our website:

www.joy-it.net