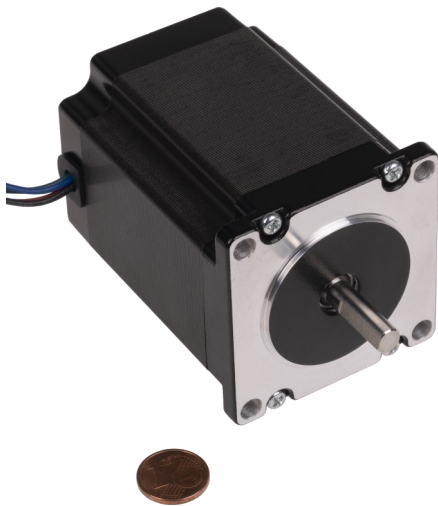


NEMA23-05

High torque stepper motor



Our NEMA 23 series are high torque stepper motors. This stepper motor with high performance can be optimally used for tasks in the areas of CNC (f. e. milling machines, etc.) or robotics.

KEY FEATURES

Shaft dimensions	Ø 6,35 x 20 mm (5,85 mm flatspot)
Specification	57SHD4824-20B-0
Connection	4 connecting cables with open ends
Steps per Revolution	200
Dimensions	56 x 56 x 120 mm
Items delivered	NEMA23-05 Stepper Motor

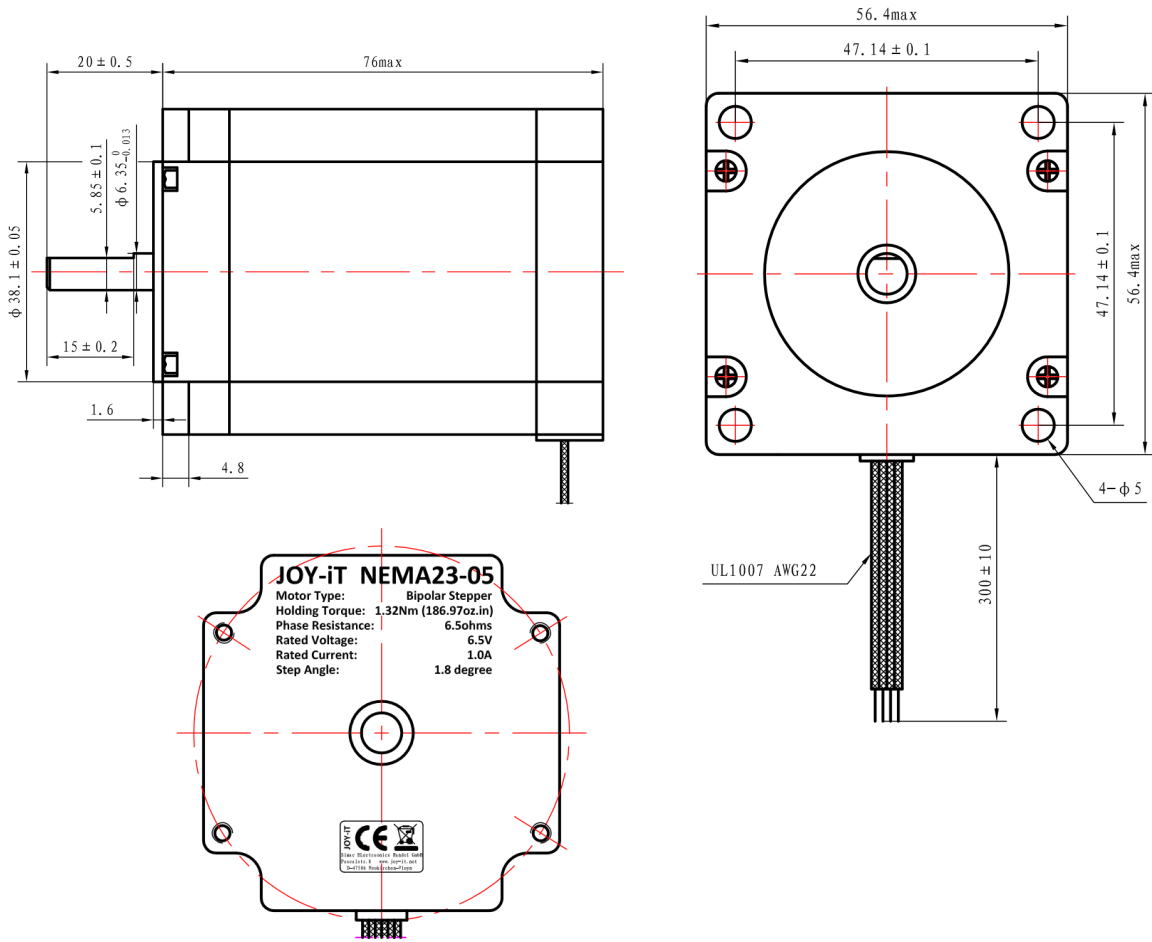
PERFORMANCE CHARACTERISTICS

Holding torque	1.3 Nm
Step angle	1.8 ° ±5 %
Rated voltage	6.5 V
Rated current	1 A
Amount of Phases	2
Phase resistance	6.5 Ω
Phase inductivity	20 mH
Isolation resistance	Min. 100MΩ by 500 V DC
Isolation class	B (130°)
Rotational inertia	460 g·cm ²
Detent torque	0.07 Nm
Operating temperature	-10 °C - 50 °C

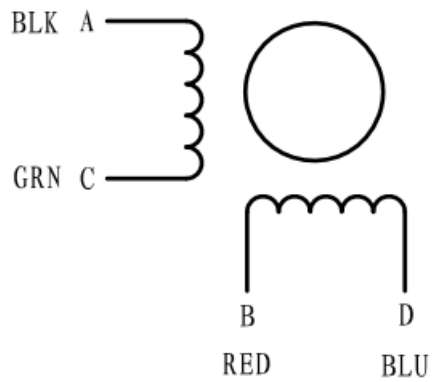
FURTHER DETAILS

Article No.	NEMA23-05
EAN	4250236821764
Customs Tariff No.	8501109990

DRAWING



WIRING



TORQUE DIAGRAM

2H-845 DRIVER SETTINGS

Voltage 49.21 V

max. current 1.5 A

T(mN.m)

1800

1620

1440

1260

1080

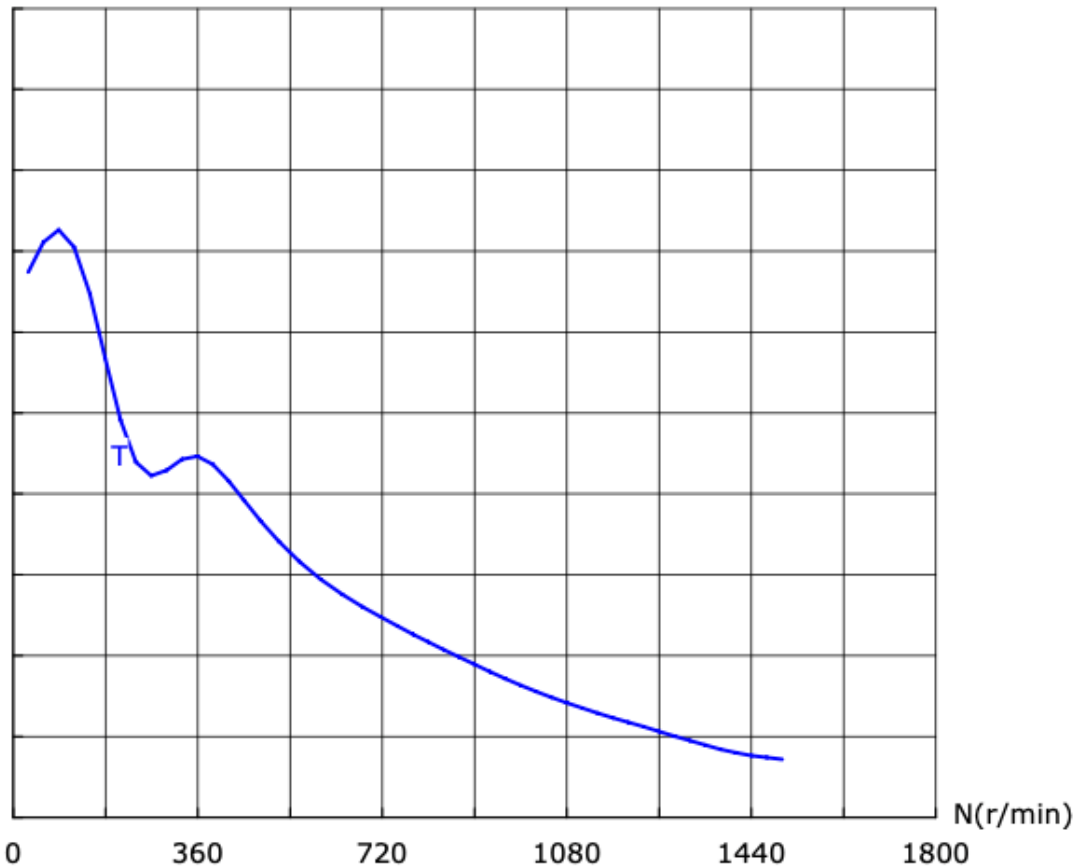
900

720

540

360

180



MAX. EFFICIENCY

Efficiency 74.9 %

Torque 529.9 mNm

Current 0.893 A

Speed 600 min⁻¹

Output power 32.73 W

MAX. TORQUE

Torque 1307.4 mNm

Current 0.595 A

Speed 89 min⁻¹

Output power 12.0 W

MAX. POWER

Torque 446.4 mNm

Current 0.907 A

Speed 717 min⁻¹

Output power 33.25 W

Published: 24.09.2025