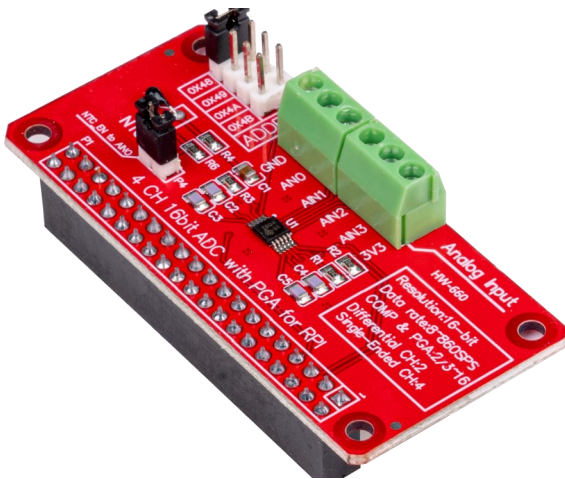


4-CHANNEL A/D MODULE FOR RASPBERRY PI

RB-ADC01



With the help of the RB-ADC01 you can read analog data with your Raspberry Pi. The 16-bit chip ADS1115 is an analog to digital converter that processes the analog signal to digital data and sends it via I2C bus to the Raspberry Pi.

The ADC module can be easily plugged into the GPIO header. So analog sensors and other accessories can be used.

MAIN FEATURES

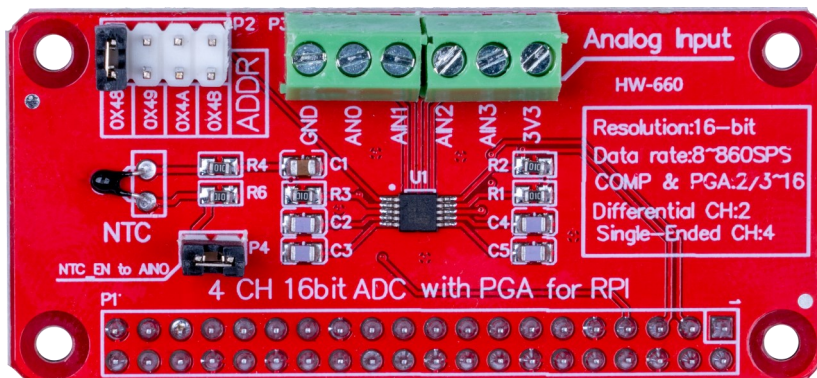
Model	ADS1115
Function	Analog Digital Converter
Interface	I2C
Channels	4
Special feature	Using analog peripherals with the Raspberry Pi
Dimensions	65 x 30 x 18 mm
Items delivered	RB-ADC01 module

FURTHER SPECIFICATIONS

Analog input voltage	3.3 V
Analog input current	10 mA continuous 100 mA peak
Resolution	16 bit
I2C address	0x48 (default) 0x49~0x4B (configurable)
Programmable data rate	8 SPS to 860 SPS
Environment temperature	-30 - 80 °C

FURTHER DETAILS

Article No.	RB-ADC01
EAN:	4250236822006
Customs Tariff No.	8473302000



Published: 09.08.2021