



RASPBERRY PI 5 ALUMINUM CASE

RB-AlucaseP5-06B

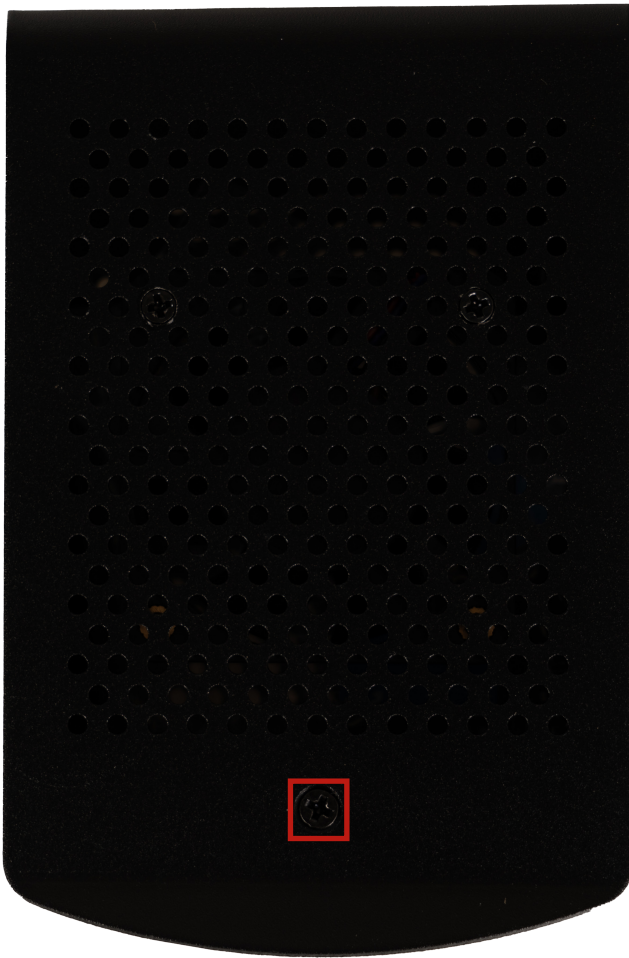
1. GENERAL INFORMATION

Dear customer,

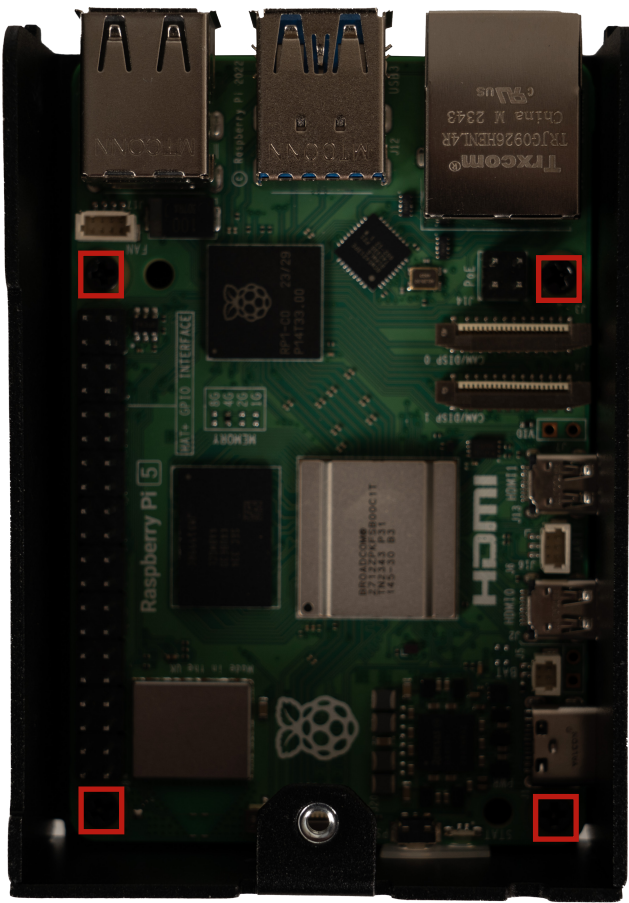
thank you for choosing our product. In the following, we will show you what you need to bear in mind during commissioning and use. Should you encounter any unexpected problems during use, please do not hesitate to contact us.

2. MONTAGE

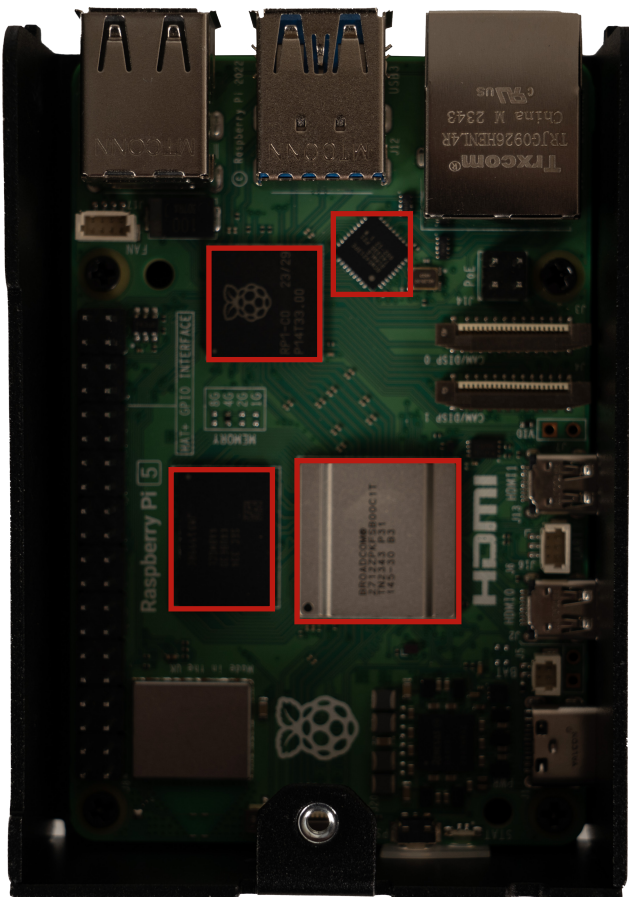
Open the housing by loosening the screw marked below:



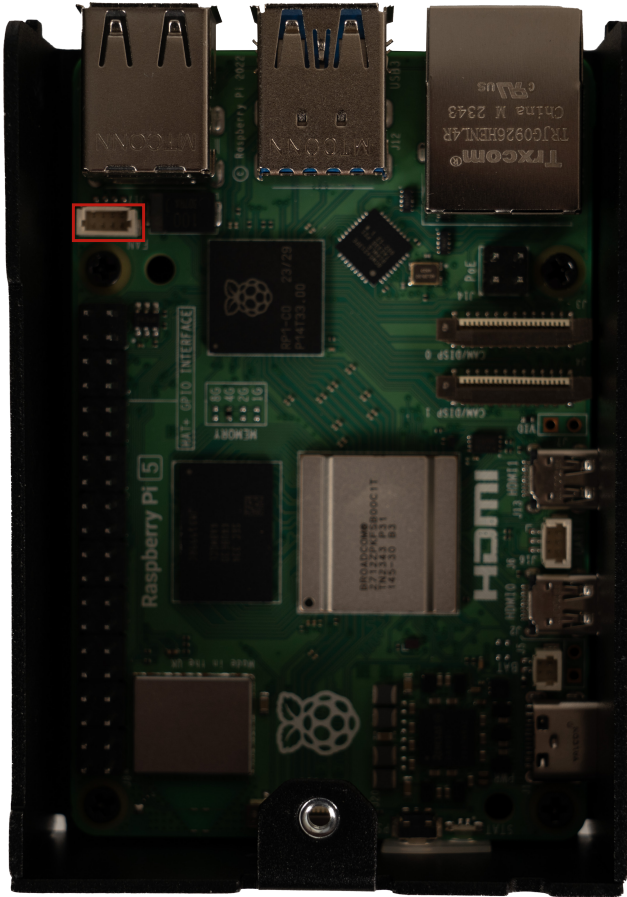
Now place your Raspberry Pi 5 on top and secure it with the enclosed screws:



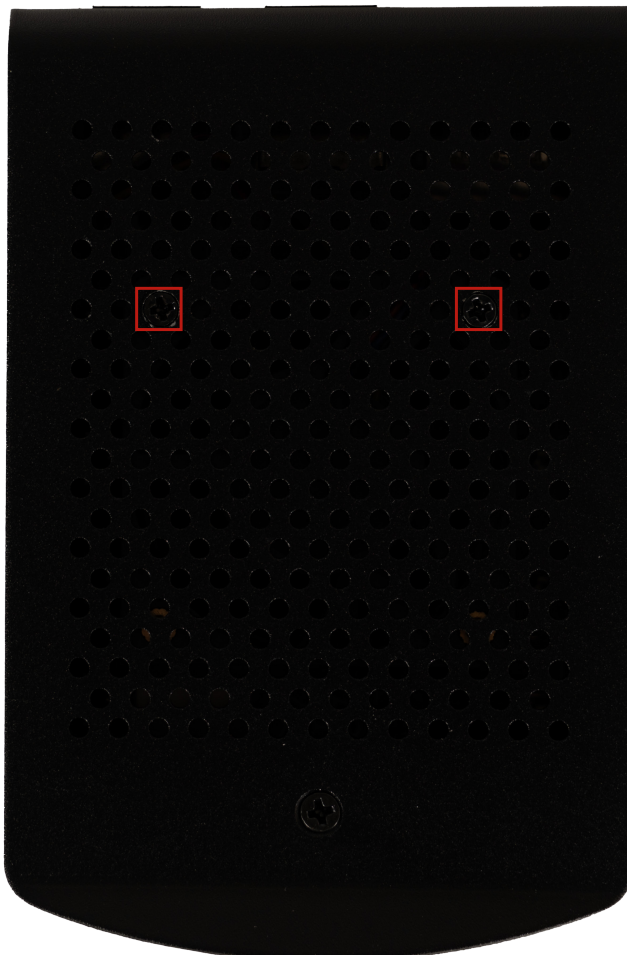
Now attach the enclosed heat sinks to your Raspberry Pi. To do this, remove the adhesive film from the thermal pads and place the heat sinks in the following position:



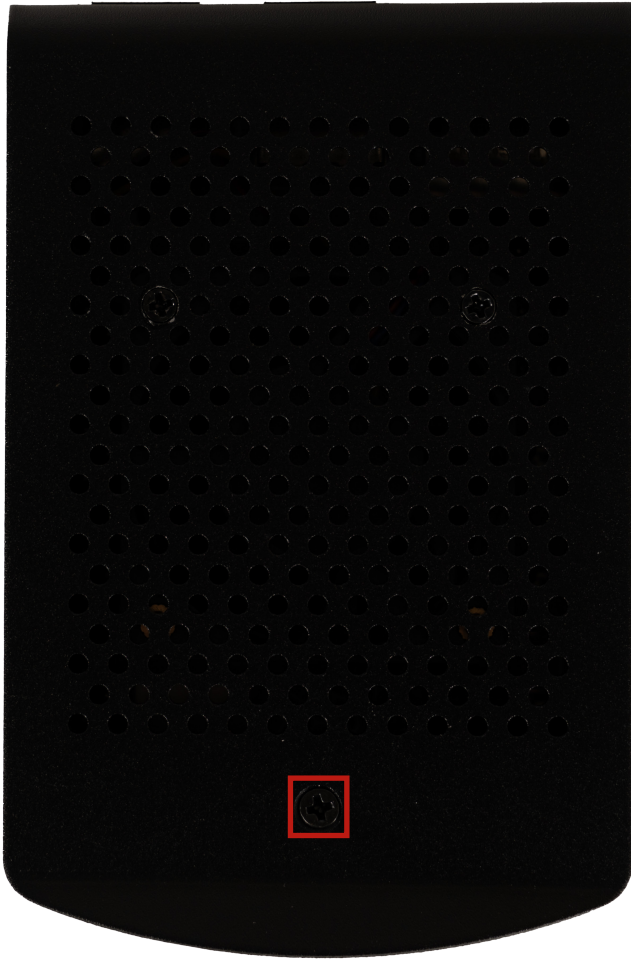
You can now connect the active cooler installed in the housing as standard or simply remove it from the housing. If you want to use the fan, connect the fan cable to the fan connection marked below on your Raspberry Pi 5:



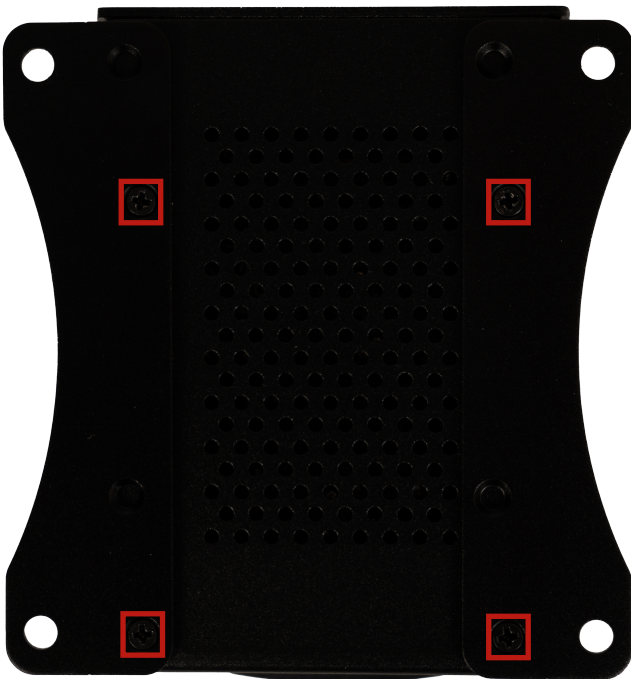
If you do not want to use the fan, you can remove it by loosening the two screws marked below:



Now reassemble the housing and screw it back together with the screw marked below:



Now turn the enclosure over and mount the enclosed fastening straps from below using the remaining screws provided. Your housing is now fully assembled and ready for use!



3. OTHER INFORMATION

Our information and take-back obligations under the German Electrical and Electronic Equipment Act (ElektroG)



SYMBOL ON ELECTRICAL AND ELECTRONIC EQUIPMENT

This crossed-out garbage can means that electrical and electronic appliances do not belong in household waste. You must hand in the old appliances at a collection point. Before handing them in, you must separate used batteries and accumulators that are not enclosed by the old appliance.

RETURN OPTIONS:

As an end user, you can hand in your old appliance (which essentially fulfills the same function as the new appliance purchased from us) for disposal free of charge when purchasing a new appliance. Small appliances with no external dimensions greater than 25 cm can be disposed of in normal household quantities regardless of whether you have purchased a new appliance.

POSSIBILITY OF RETURN AT OUR COMPANY LOCATION DURING OPENING HOURS:

SIMAC Electronics GmbH, Pascalstr. 8, D-47506 Neukirchen-Vluyn

RETURN OPTION IN YOUR AREA:

We will send you a parcel stamp with which you can return the device to us free of charge. To do so, please contact us by e-mail at Service@joy-it.net or by telephone.

PACKAGING INFORMATION:

Please pack your old appliance securely for transportation. If you do not have suitable packaging material or do not wish to use your own, please contact us and we will send you suitable packaging.

4. SUPPORT

We are also there for you after your purchase. If you still have any questions or problems arise, we are also available by e-mail, telephone and ticket support system.

E-Mail: service@joy-it.net

Ticket-System: <http://support.joy-it.net>

Phone: +49 (0)2845 9360 - 50 (Mo. - Do.: 09:00 - 17:00 Uhr, Fr.: 09:00 - 14:30 Uhr)

For further information, please visit our website:

www.joy-it.net