

# JOY-IT



Joy-IT Raspberry Pi3 Industry  
Aluminum-Case  
incl. Dinrail-Holder

Index

---

1. Introduction

2. Assembling

3. Support

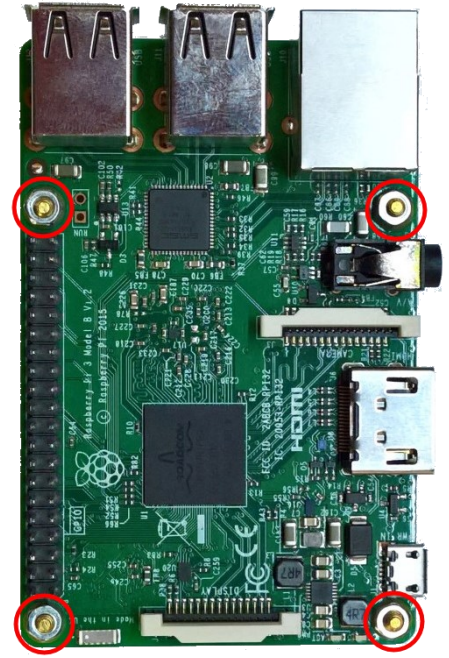
## 1. Introduction

Dear customer,  
Thank you for choosing our product.  
In the following we will show you how to use your product.

If you encounter any unexpected problems during use, please feel free to contact us.

## 2. Assembling

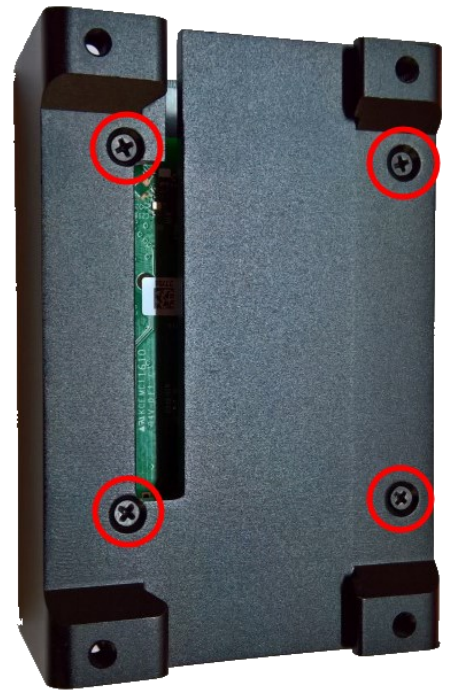
First, the brass spacers are attached to the Raspberry Pi. These are inserted through the holes on the underside of the Raspberry Pi and screwed on the top side with the enclosed nuts.



Now push the Raspberry Pi into the case.

Please make sure that the Audio, HDMI & Micro-USB connector is located in the openings of the case.

Now the Raspberry Pi can be screwed to the housing on the bottom.



Now the covers can be fixed with the screws.



### 3. Support

We also support you after your purchase. If you encounter any problems or if there are any questions left please feel free to contact us by mail, phone or by our ticket-supportsystem on our website.

E-Mail: [service@joy-it.net](mailto:service@joy-it.net)

Ticket-System: <http://support.joy-it.net>

Phone: +49 (0)2845 98469 – 66 (11- 18 Uhr)

Please visit our website for more informations:

[www.joy-it.net](http://www.joy-it.net)